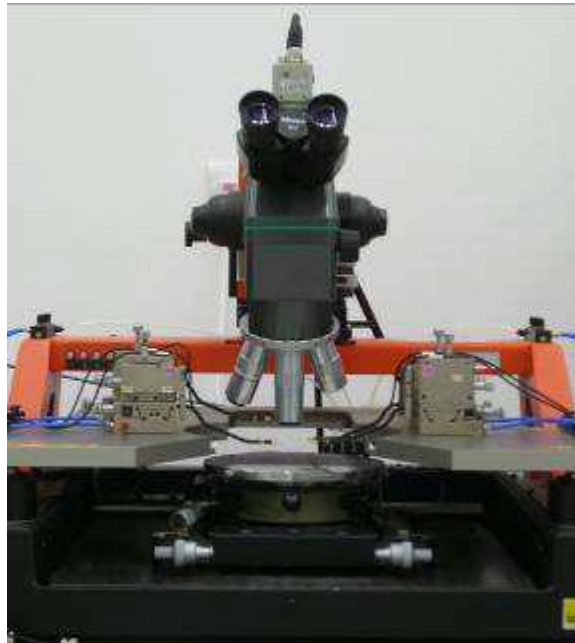


FormFactor PM8



Capability/Application

The PM8 is designed to provide a highly stable, ergonomic and flexible probing platform for precise analytical probing applications up to 200 mm, such as device and wafer characterizations, failure analysis (FA), RF/mmW and sub-THz probing, opto-engineering and MEMS. Applications: IV/CV, RF/mmW, Failure Analysis, Silicon Photonics, MEMS

Specifications

Sample stage: capable of holding 8" wafer

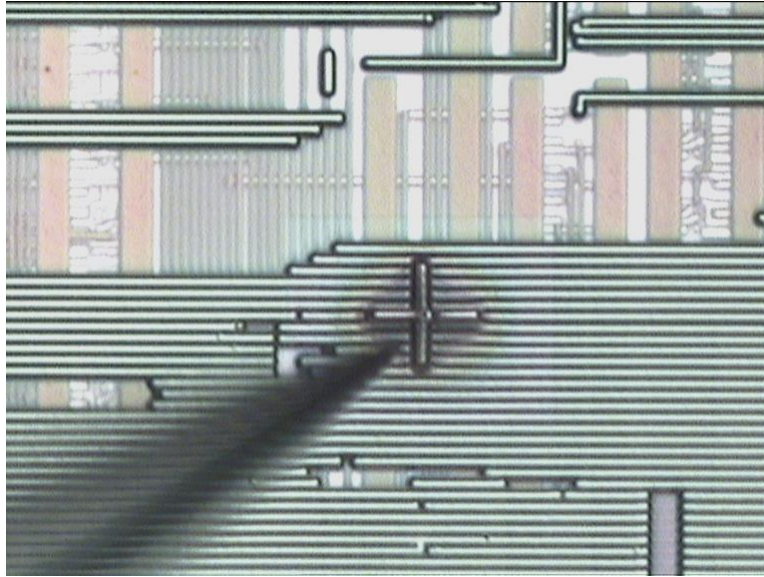
Microscope Objectives: 5x, 10x, 20x, 50x

CCD: capable of video capture

Software: Radlite 3.1

Probe head: PH120, PH150

Example application images



Signal acquisition on an integrated circuit chip via a FIB probe point

Equipment manufacturer web page

<https://www.formfactor.com/product/probe-systems/200-mm-systems/pm8/>

Youtube demo videos

<https://www.youtube.com/watch?v=jv8ZdIg3e9s>