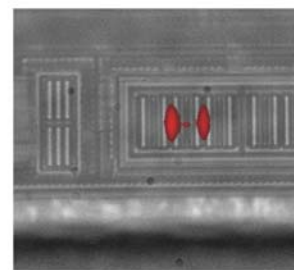
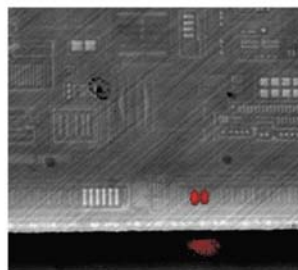
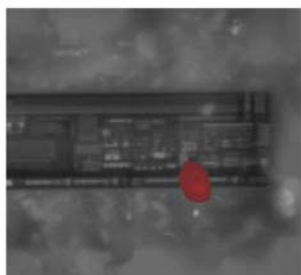
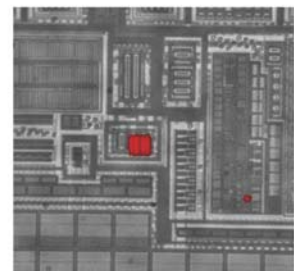
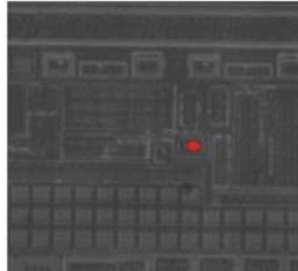
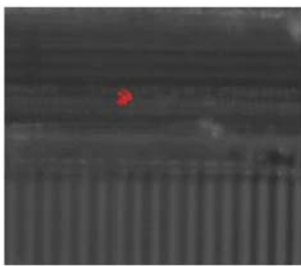


Emission Microscope, EMMI & Laser Scanning Microscope (DCG Systems Meridian)



The Meridian Emission Microscope (EMMI) system provides visibility to detect very faint emission signals by utilizing its high sensitivity short wave infrared InGaAs camera for thru-silicon photon detection with the spectral range of 0.9 – 1.6 μm . This systems also equips with advanced Laser Scanning Microscope, to check out the internal short location with OBIRCH mechanism.

With Laser Scanning module, this equipment can perform OBIRCH, OBIC and SEI mechanism for checking shorts, opens, and contaminations on both front side and backside of the chips.



HYPER LENS

5X LENS

20X LENS