

Leica S6D Stereomicroscope



Capability/Application

The Leica S6D stereomicroscope with 6.3:1 zoom and integrated video/photo port allows easy, fast documentation for assembly, quality control, OEM and research applications. Adjustable zoom stops allows fast, easy, repeatable measurements and inspections.

The large field of view up to 36.5 mm and high depth of field, reduces sample handling and improves inspection times. Ergonomic 38° viewing angle helps increase productivity, reduce fatigue related inspection errors and acquire precise positioning while working with incident light. The integrated documentation port allows to connect digital cameras.

Specifications

Sample stage: 6"x4" manual XY stage

Objectives: 1x, 0.63x, 0.32x

Zoom range: 0.63x ~4.0x

Illumination: LED spot light, LED ring light

Oblique observation: 45° angle image rotator, 150mm cup stage

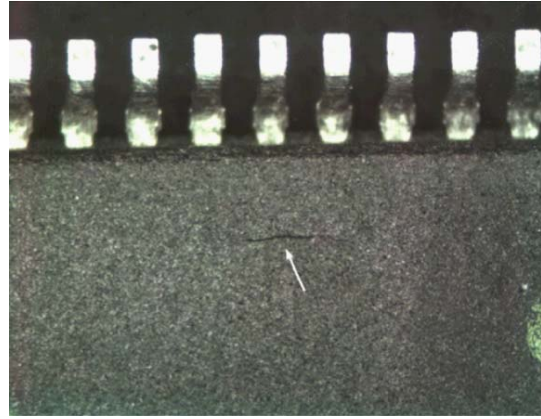
Digital camera: DFC295 (3M pixels)

Software: Leica LAS for measurements and live XYZ Builder

Example application images



Inspection for stacked die bonding



Inspection for package crack

Equipment manufacturer web page

<https://www.leica-microsystems.com/products/stereo-microscopes-macroscopes/p/leica-s6-d/>

Youtube demo videos

<https://www.youtube.com/watch?v=x2RUoNd5LdQ>